

NBJ-310M

JINSHI SOLAR MODEL

72 CELLS

MONOCRYSTALLINE MODULE

300-320W

POWER OUTPUT RANGE

16.5%

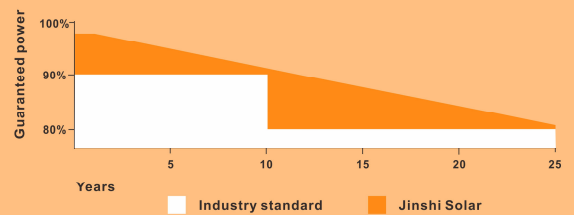
MAXIMUM EFFICIENCY

0~+3%

POWER OUTPUT GUARANTEE

LINEAR PERFORMANCE WARRANTY

10 Year product warranty • 25 Year linear power warranty



- Solar cell: High efficiency crystalline solar cell. Even if under the weak light, the solar module can produce maximum power output.
- Tempered glass: Anti-reflecting coating and high transmission rate glass increasing the power output and mechanical strength of solar module.
- EVE and TPT: Using high quality EVA and TPT to prevent destroying and water.
- All frames: Without screws corner connection. 8 holes on the frame can be installed easily.
- Junction box: Multi-functional and water-proof junction box.
- Long lifetime: 25 years; less power decrease.
- Good performance of preventing from atrocious weather such as wind and hails.
- Resisting moisture and etching effectively, not effected by geology.
- Certificates issued by international authorities: ISO Quality Management system, CE, TUV (IEC61215 and IEC61730)



Mechanical Characteristics:

| | |
|--------------------|-------------|
| Cell Size (mm) | 156X156 |
| No. of cells | 72(6X12) |
| Module Size (mm) | 1956X992X50 |
| Module Weight (KG) | 23 |

Packaging Specifications:

| | |
|-------------------------------------|-------------|
| Number of modules per pallet | 20 |
| Number of pallets per 40' container | 24 |
| Packaging box dimensions (cm) | 198x108x225 |
| Box Weight (KG) | 480 |

This publication summarizes product warranty and specification, which is subject to change without notice.

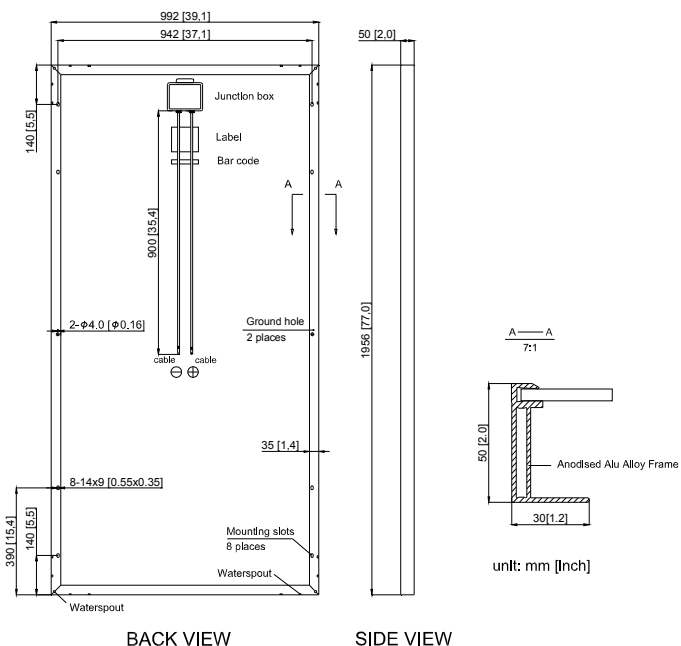


Construction Materials:

| | |
|---------------|---------------------------------------|
| Front Glass | 3.2mm, Low Iron, Tempered Glass |
| Frame | Anodized Aluminum Alloy Type 6063-T5 |
| Junction Box | IP 65 Rated (Black) |
| Output Cables | TUV 1×4mm ² , length:900mm |

| | |
|------------------------|------------------------------------|
| Connector | MC4 (IP67) |
| Encapsulation Material | EVA(0.45 ± 0.03mm thickness) |
| Back Foil | White TPT(0.32 ± 0.03mm thickness) |
| Fixing Adhesive | Silicone Sealant(White) |

Module Diagram:



Temperature Coefficient:

| | |
|---------------------------------|------------------|
| Power Tolerance | 0~+3% |
| Temperature Coefficient of Pmax | (-0.41±0.05)%/°C |
| Temperature Coefficient of Voc | (-0.34±0.02)%/°C |
| Temperature Coefficient of Isc | (0.05±0.01) %/°C |
| NOTC(°C) | (47±2) °C |

Operating Conditions:

| | |
|---|---------------|
| Max. system voltage | 1000DVC (IEC) |
| Max. system fuse rating (A) | 15 |
| Operating temperature (°C) | -40~85 |
| Max. static load, front (e.g., snow) pa | 5400 |
| Max. static load, back (e.g., wind) pa | 2400 |

Electrical Parameters at Standard Test Conditions (STC)

| Module type | NBJ-300M | NBJ-305M | NBJ-310M | NBJ-315M | NBJ-320M |
|-------------------------------|----------|----------|----------|----------|----------|
| Rated Maximum Power (Pmax/W) | 300 | 305 | 310 | 315 | 320 |
| Maximum Power Voltage (Vmp/V) | 36.77 | 36.93 | 37.04 | 37.15 | 37.35 |
| Open-circuit Voltage (Voc/V) | 45.28 | 45.41 | 45.57 | 45.73 | 45.86 |
| Maximum Power Current (Imp/A) | 8.16 | 8.26 | 8.37 | 8.48 | 8.57 |
| Short-circuit Current (Isc/A) | 8.71 | 8.78 | 8.85 | 8.92 | 8.99 |
| Module Efficiency (%) | 15.46 | 15.71 | 15.97 | 16.23 | 16.50 |

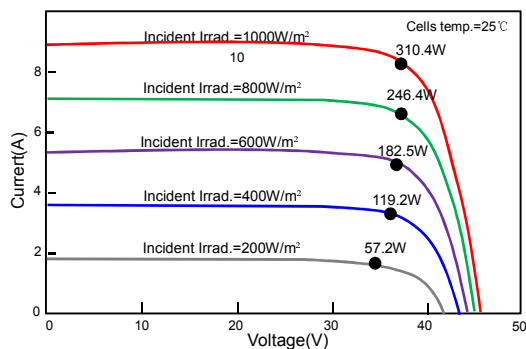
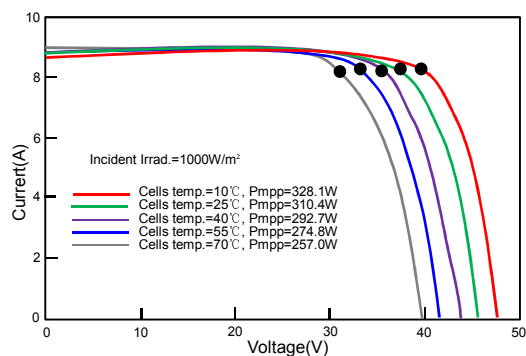
STC: Irradiance 1000W/M² Module Temperature: 25°C AM=1.5

Electrical Parameters at Nominal Operating Cell Temperature (NOCT)

| Module type | NBJ-300M | NBJ-305M | NBJ-310M | NBJ-315M | NBJ-320M |
|-------------------------------|----------|----------|----------|----------|----------|
| Max Power (Pmax/W) | 219.60 | 223.26 | 226.92 | 230.58 | 234.24 |
| Maximum Power Voltage (Vmp/V) | 33.94 | 34.03 | 34.07 | 34.16 | 34.25 |
| Open-circuit Voltage (Voc/V) | 42.07 | 42.18 | 42.23 | 42.48 | 42.72 |
| Maximum Power Current (Imp/A) | 6.47 | 6.56 | 6.66 | 6.75 | 6.84 |
| Short-circuit Current (Isc/A) | 6.97 | 7.02 | 7.07 | 7.13 | 7.15 |

Under Nominal Operating Cell Temperature (NOCT), irradiance of 800 W/m², spectrum AM1.5, ambient temperature 20°C, wind speed 1m/s.

I-V Curve:



This publication summarizes product warranty and specification, which is subject to change without notice.